



DATA DISPLAY GROUP

2D Drawing

eTurboTouch

SR-230M182235D1

TO-19-700

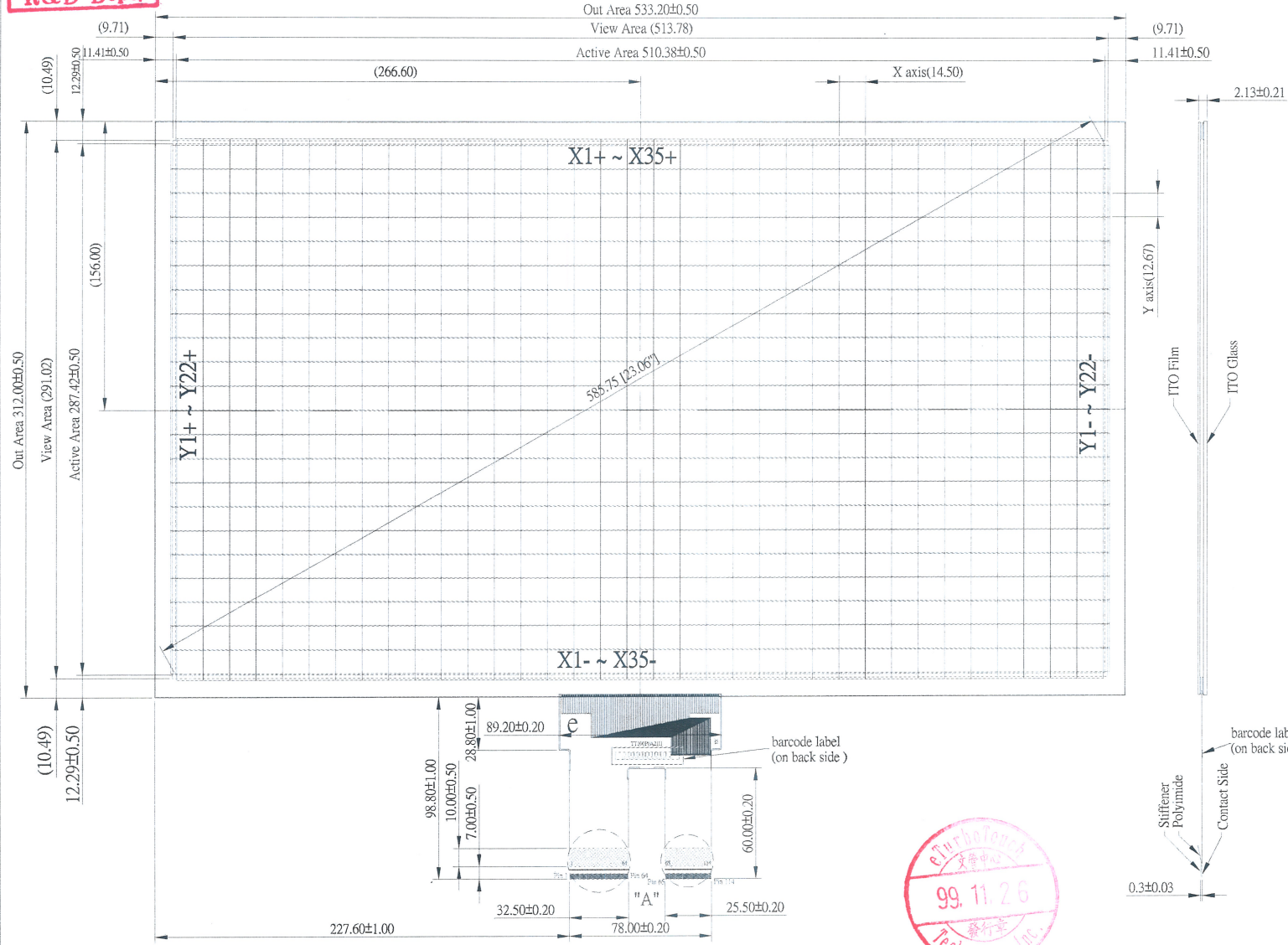
The information contained in this document has been carefully researched and is, to the best of our knowledge, accurate. However, we assume no liability for any product failures or damages, immediate or consequential, resulting from the use of the information provided herein. Our products are not intended for use in systems in which failures of product could result in personal injury. All trademarks mentioned herein are property of their respective owners. All specifications are subject to change without notice.

Approved

99.11.19

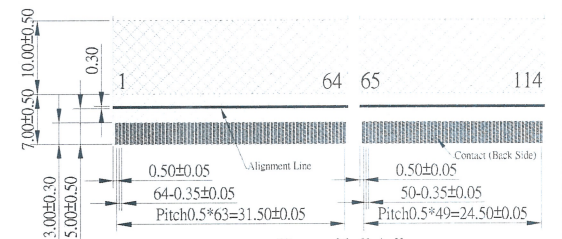
eTurboTouch
R&D Dept.

| | | |
|------|----------|--|
| Rev1 | 02,01'10 | First release |
| Rev2 | 04,27'10 | Modify tail lenght and Active Area dimension |
| Rev3 | 05,12'10 | Modify tail type |



FPC Tail

| Pin No. | Pin Description | Pin No. | Pin Description | Pin No. | Pin Description |
|---------|-----------------|---------|-----------------|---------|-----------------|
| 1 | X18+ | 39 | X21- | 77 | Y16+ |
| 2 | X17+ | 40 | X22- | 78 | Y15+ |
| 3 | X16+ | 41 | X23- | 79 | Y14+ |
| 4 | X15+ | 42 | X24- | 80 | Y13+ |
| 5 | X14+ | 43 | X25- | 81 | Y12+ |
| 6 | X13+ | 44 | X26- | 82 | Y11+ |
| 7 | X12+ | 45 | X27- | 83 | Y10+ |
| 8 | X11+ | 46 | X28- | 84 | Y9+ |
| 9 | X10+ | 47 | X29- | 85 | Y8+ |
| 10 | X9+ | 48 | X30- | 86 | Y7+ |
| 11 | X8+ | 49 | X31- | 87 | Y6+ |
| 12 | X7+ | 50 | X32- | 88 | Y5+ |
| 13 | X6+ | 51 | X33- | 89 | Y4+ |
| 14 | X5+ | 52 | X34- | 90 | Y3+ |
| 15 | X4+ | 53 | X35- | 91 | Y2+ |
| 16 | X3+ | 54 | X35+ | 92 | Y1+ |
| 17 | X2+ | 55 | X34+ | 93 | Y1- |
| 18 | X1+ | 56 | X33+ | 94 | Y2- |
| 19 | X1- | 57 | X32+ | 95 | Y3- |
| 20 | X2- | 58 | X31+ | 96 | Y4- |
| 21 | X3- | 59 | X30+ | 97 | Y5- |
| 22 | X4- | 60 | X29+ | 98 | Y6- |
| 23 | X5- | 61 | X28+ | 99 | Y7- |
| 24 | X6- | 62 | X27+ | 100 | Y8- |
| 25 | X7- | 63 | X26+ | 101 | Y9- |
| 26 | X8- | 64 | X25+ | 102 | Y10- |
| 27 | X9- | 65 | X24+ | 103 | Y11- |
| 28 | X10- | 66 | X23+ | 104 | Y12- |
| 29 | X11- | 67 | X22+ | 105 | Y13- |
| 30 | X12- | 68 | X21+ | 106 | Y14- |
| 31 | X13- | 69 | X20+ | 107 | Y15- |
| 32 | X14- | 70 | X19+ | 108 | Y16- |
| 33 | X15- | 71 | Y22+ | 109 | Y17- |
| 34 | X16- | 72 | Y21+ | 110 | Y18- |
| 35 | X17- | 73 | Y20+ | 111 | Y19- |
| 36 | X18- | 74 | Y19+ | 112 | Y20- |
| 37 | X19- | 75 | Y18+ | 113 | Y21- |
| 38 | X20- | 76 | Y17+ | 114 | Y22- |



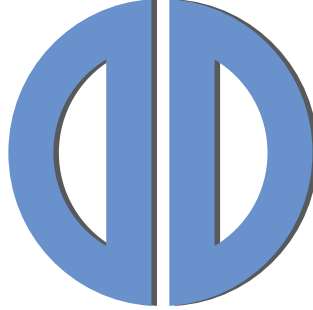
- Notes:
1. TOPSHEET HARDCOAT IS PURE POLISH
 2. GLASS THICKNESS 1.8mm
 3. FLEXTAIL DO NOT BEND TO LESS THAN 3.175mm RADIUS
 4. OVERALL SENSOR THICKNESS IS 2.13±0.21mm
 5. SENSOR INPUT BY PEN / FINGER

| | | | | |
|------------------------|------------|--------------|----------|-----------------|
| Third Angle Projection | | Dimensions | m/m | |
| Drawn By | Sandy Yang | Scale | FREE | |
| Checked By | Orly Lin | Release Date | 05,12'10 | Drawing Number |
| RoHS | | | | SR-230M182235D1 |



DATA DISPLAY GROUP

Our company network supports you worldwide with offices in Germany, Great Britain, Italy, Turkey and the USA. For more information please contact:



DATA DISPLAY GROUP

Distec GmbH

Augsburger Str. 2b
82110 Germering
Germany

Phone: +49 (0)89 / 89 43 63-0
Fax: +49 (0)89 / 89 43 63-131
E-Mail: info@datadisplay-group.de
Internet: www.datadisplay-group.de

Display Technology Ltd.

5 The Oaks Business Village
Revenge Road, Lordswood
Chatham, Kent, ME5 8LF
United Kingdom

Phone: +44 (0)1634 / 67 27 55
Fax: +44 (0)1634 / 67 27 54
E-Mail: info@datadisplay-group.co.uk
Internet: www.datadisplay-group.co.uk

Data Display S.r.l.

Via Marco Polo, 9/D
I-35010 Trebaseleghe (PD)
Italy

Phone: +39 049 / 72 40 038
Fax: +39 049 / 72 40 039
E-Mail: info@datadisplay-group.it
Internet: www.datadisplay-group.it

Data Display Teknoloji Elektronik San Ve Diş Tic A.Ş.

Kustepe Leylak Sok.
Nursanlar Is Merkezi
Kat. 6 No: 21
Sisli / Istanbul
Turkey

Phone: +90 (0)212 / 356 04 20
Fax: +90 (0)212 / 356 04 25
E-Mail: info@datadisplay-group.com.tr
Internet: www.datadisplay-group.com.tr

Apollo Display Technologies, Corp.

87 Raynor Avenue, Unit 1
Ronkonkoma, NY 11779
United States of America

Phone: +1 631 / 580-43 60
Fax: +1 631 / 580-43 70
E-Mail: info@datadisplay-group.com
Internet: www.datadisplay-group.com
