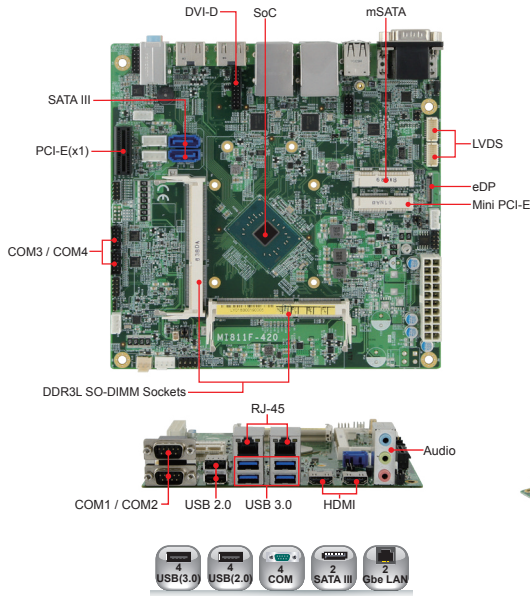

Datasheet

iBase

MI811

The information contained in this document has been carefully researched and is, to the best of our knowledge, accurate. However, we assume no liability for any product failures or damages, immediate or consequential, resulting from the use of the information provided herein. Our products are not intended for use in systems in which failures of product could result in personal injury. All trademarks mentioned herein are property of their respective owners. All specifications are subject to change without notice.

NEW



Features

- Intel® Pentium® QC N4200 @ 2.5GHz or Celeron® DC N3350 @ 2.4GHz on board
- 2x DDR3L SO-DIMM sockets, Max. 8GB
- Supports HDMI, HDMI / DVI-D and eDP / 24-bit dual channel LVDS
- 2x Intel® I211-AT PCI-E Gigabit LAN
- Watchdog timer, Digital I/O
- 4x USB 3.0, 4x USB 2.0, 4x COM, 2x SATA III
- 1x PCI-E(x1), 1x Mini PCI-E, 1x mSATA



System

CPU	Intel® Pentium® QC N4200 @ 1.1GHz ~ 2.5GHz Intel® Celeron® DC N3350 @ 1.1GHz ~ 2.4GHz
System Memory	2x DDR3L-1866 SO-DIMM socket, Max. 8GB
BIOS	AMI
Watchdog Timer	256 levels
SSD	1x mSATA
H/W Monitor	Yes
Expansion Slots	1x PCI-E(1x), 1x Mini PCI-E

Mechanical and Environmental

Dimensions	170mm x 170mm (6.7" x 6.7")
Max. Power Requirement	Intel® Pentium® N4200 2.5GHz w/ 2x DDR3L 1600 4GB + 12V: 1.27A
Operating Temperature	0°C~60°C (32°F~140°F)
Storage Temperature	-20°C~80°C (-4°F~176°F)
Relative Humidity	90% (non-condensing @60°C)

Graphics

VGA Controller	Intel® Pentium® SoC integrated Intel® Gen 9 graphics
VGA Memory	Shared memory
Display Interface	Supports HDMI, 2nd HDMI or DVI-D, eDP or 24-bit dual channel LVDS

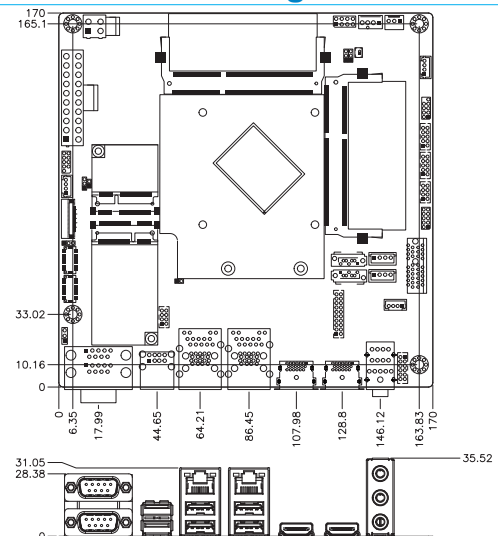
Ordering Information

MI811F-420	Intel® Pentium® N4200(1.1~2.5GHz) onboard Mini-ITX motherboard with heatsink, w/ HDMI#1, HDMI#2 or DVI-D, eDP or LVDS, 2x PCI-E Gigabit LAN, ATX-in
MI811F-420D	Intel® Pentium® N4200(1.1~2.5GHz) onboard Mini-ITX motherboard with heatsink, w/ HDMI#1, HDMI#2 or DVI-D, eDP or LVDS, 2x PCI-E Gigabit LAN, 12V~24V DC-in
MI811F-335	Intel® Celeron® N3350(1.1~2.4GHz) onboard Mini-ITX motherboard with heatsink, w/ HDMI#1, HDMI#2 or DVI-D, eDP or LVDS, 2x PCI-E Gigabit LAN, ATX-in
MI811F-335D	Intel® Celeron® N3350(1.1~2.4GHz) onboard Mini-ITX motherboard with heatsink, w/ HDMI#1, HDMI#2 or DVI-D, eDP or LVDS, 2x PCI-E Gigabit LAN, 12V~24V DC-in

LAN

Controller	Intel® I211AT PCI-E Gigabit LAN
Connector	RJ-45 on board

Dimensions and Drawing



Multi I/O

I/O Chipset	Fintek F81846AD-1 1x RS232/422/485(Jumperless selection), 3x RS232
USB	4 ports onboard (USB 3.0) 2 ports onboard + 2 ports via pin header (USB 2.0)
Serial ATA	2x SATA III
Audio	Intel® Pentium® SoC built-in High Definition Audio controller + Realtek ALC283 w/ 2.1 channels+ amplifier
Others	Digital I/O (4-in/4-out); ATX or 12V~24V DC-in ; EUP/ErP

Our company network supports you worldwide with offices in Germany, Austria, Switzerland, Great Britain and the USA. For more information please contact:

Headquarters

Germany



FORTEC Elektronik AG
Lechwiesenstr. 9
86899 Landsberg am Lech

Phone: +49 8191 91172-0
E-Mail: sales@forteca.de
Internet: www.forteca.de

Fortec Group Members

Austria



FORTEC Elektronik AG
Office Vienna

Nuschinggasse 12
1230 Wien

Phone: +43 1 8673492-0
E-Mail: office@fortec.at
Internet: www.fortec.at

Germany



Distec GmbH

Augsburger Str. 2b
82110 Germering

Phone: +49 89 894363-0
E-Mail: info@distec.de
Internet: www.distec.de

Switzerland



ALTRAC AG

Bahnhofstraße 3
5436 Würenlos

Phone: +41 44 7446111
E-Mail: info@altrac.ch
Internet: www.altrac.ch

United Kingdom



Display Technology Ltd.

5 The Oaks Business Village
Revenge Road, Lordswood
Chatham, Kent, ME5 8LF

Phone: +44 1634 672755
E-Mail: info@displaytechnology.co.uk
Internet: www.displaytechnology.co.uk

USA



Apollo Display Technologies, Corp.

87 Raynor Avenue,
Unit 1 Ronkonkoma,
NY 11779

Phone: +1 631 5804360
E-Mail: info@apolloDisplays.com
Internet: www.apolloDisplays.com