



OUR GLOBAL
COMPETENCE
CENTRES

 APOLLO DISPLAY
TECHNOLOGIES



 DISTEC



 DISPLAY
TECHNOLOGY



Datasheet

Disea

ZW-T177TTS-101

DE-06-001

PRODUCT SPECIFICATIONS

For Customer: _____ : APPROVAL FOR SPECIFICATION

Customer Model No. _____ : APPROVAL FOR SAMPLE

Module No.: ZW-T177TTS-101

Date : 2018-07-18

Version :0

Table of Contents

| No. | Item | Page |
|-----|--|------|
| 1 | Cover Sheet(Table of Contents) | |
| 2 | Revision Record | |
| 3 | General Specifications | |
| 4 | Outline Drawing | |
| 5 | Absolute Maximum Ratings | |
| 6 | Electrical Specifications and Instruction Code | |
| 7 | Optical Characteristics | |
| 8 | Reliability Test Items and Criteria | |
| 9 | Quality Level | |
| 10 | Packing Reliability | |
| | | |
| | | |
| | | |

For Customer's Acceptance:

| Approved By | Comment |
|-------------|---------|
| | |

| PREPARED | CHECKED | VERIFIED BY QA DEPT | VERIFIED BY R&D DEPT |
|----------|---------|---------------------|----------------------|
| | | | |

2. Revision Record

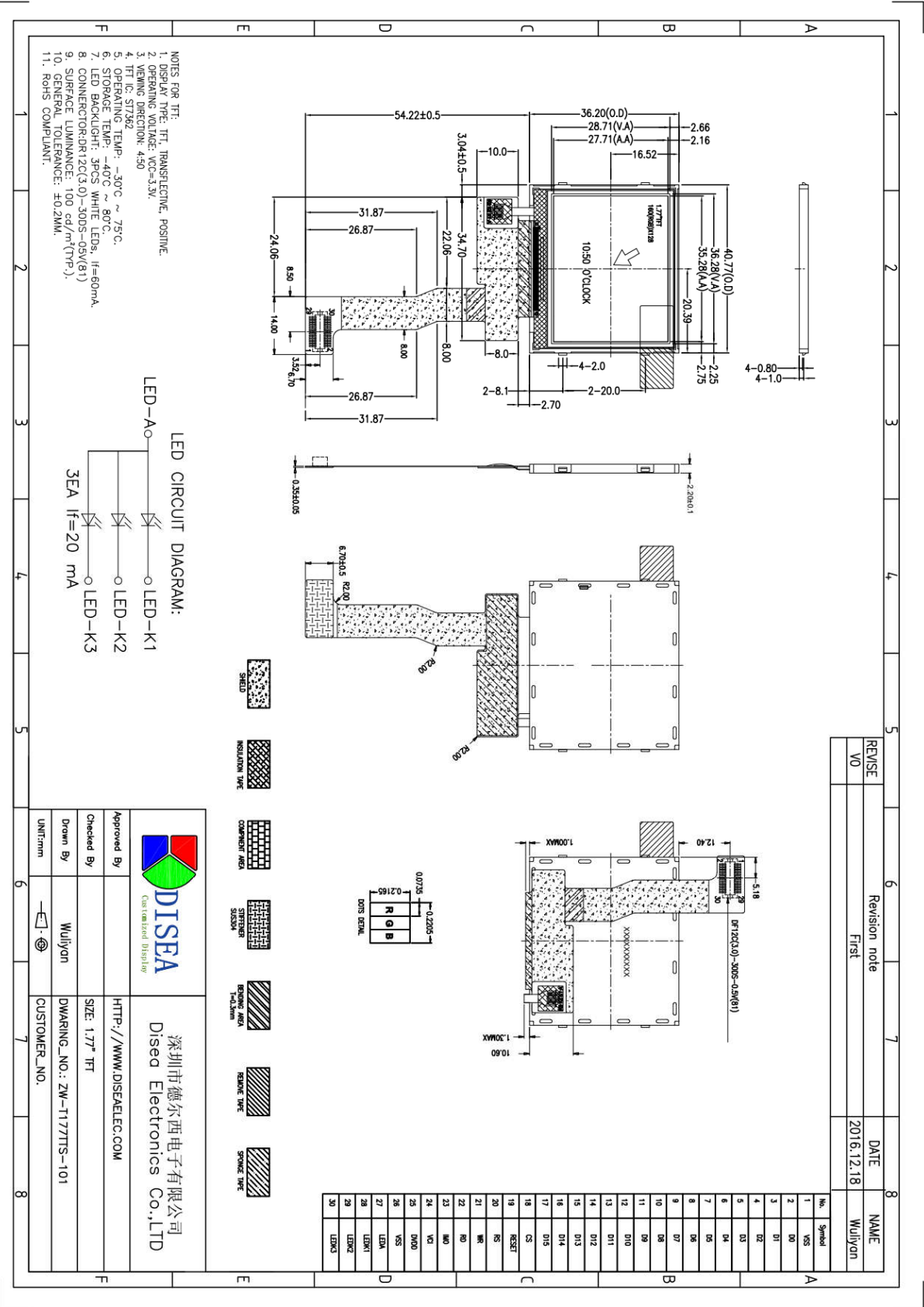
| Date | Rev.No. | Page | Revision Items | Prepared |
|------------|---------|------|-------------------|----------|
| 2018-07-18 | V0 | | The first release | RICHIE |
| | | | | |
| | | | | |
| | | | | |

3. General Specifications

ZW-T177TTS-101 is a TFT-LCD module. It is composed of a TFT-LCD panel, driver IC, FPC, a back light unit. The 1.77" display area contains 160 x 128 pixels and can display up to 262K colors. This product accords with RoHS environmental criterion.

| Item | Contents | Unit | Note |
|--------------------------------|----------------------|---------|------|
| LCD Type | TFT/Transflective | - | |
| Display color | 262K | | 1 |
| Viewing Direction | 10:50 | O'Clock | |
| Gray scale inversion direction | 4:50 | O'Clock | |
| Operating temperature | -30~+75 | °C | |
| Storage temperature | -40~+85 | °C | |
| Module size | 40.77x36.20x2.2 | mm | 2 |
| Active Area(W×H) | 35.28×27.712 | mm | |
| Number of Dots | 160(RGB)×128 | dots | |
| Controller | ST7362 | - | |
| Power Supply Voltage | 3.3 | V | |
| Backlight | 3LEDs serial (white) | pcs | |
| Weight | TBD | g | |
| Interface | MCU 8/16bit | - | |

4.OutlineDrawing



| REVISE | Revision note | DATE | NAME |
|--------|---------------|------------|---------|
| VO | First | 2016.12.18 | Muliyon |

| No. | Symbol |
|-----|--------|
| 1 | VCC |
| 2 | 00 |
| 3 | 01 |
| 4 | 02 |
| 5 | 03 |
| 6 | 04 |
| 7 | 05 |
| 8 | 06 |
| 9 | 07 |
| 10 | 08 |
| 11 | 09 |
| 12 | 010 |
| 13 | 011 |
| 14 | 012 |
| 15 | 013 |
| 16 | 014 |
| 17 | 015 |
| 18 | CS |
| 19 | RESET |
| 20 | RS |
| 21 | WR |
| 22 | R0 |
| 23 | R0 |
| 24 | VCI |
| 25 | DN00 |
| 26 | VSS |
| 27 | LED+ |
| 28 | LED+ |
| 29 | LED+ |
| 30 | LED+ |

DISEA Customized Display

深圳市德尔西电子有限公司
Disea Electronics Co.,LTD

Approved By:

Checked By:

Drawn By: Muliyon

UNIT:mm

HTTP://WWW.DISEA.ELEC.COM

SIZE: 1.77" TFT

DWARING_NO.: ZW-1177TS-101

CUSTOMER_NO.:

5. Absolute Maximum Ratings(Ta=25°C)

5.1 Electrical Absolute Maximum Ratings.(Vss=0V ,Ta=25°C)

| Item | Symbol | Min. | Max. | Unit | Note |
|----------------------|-----------------|------|------|------|------|
| Power Supply Voltage | V _{CC} | -0.3 | 4.6 | V | 1, 2 |

Notes:

1. If the module is above these absolute maximum ratings. It may become permanently damaged.

Using the module within the following electrical characteristic conditions are also exceeded, the module will malfunction and cause poor reliability.

2. V_{CC} > V_{SS} must be maintained.

5.2 Environmental Absolute Maximum Ratings.

| Item | Storage | | Operating | | Note |
|---------------------|---------|------|-----------|------|------|
| | MIN. | MAX. | MIN. | MAX. | |
| Ambient Temperature | -40°C | 85°C | -30°C | 75°C | 1,2 |
| Humidity | - | - | - | - | 3 |

1. The response time will become lower when operated at low temperature.

2. Background color changes slightly depending on ambient temperature.

The phenomenon is reversible.

3. Ta<=40°C:85%RH MAX.

Ta>=40°C:Absolute humidity must be lower than the humidity of 85%RH at 40°C.

6. Electrical Specifications and Instruction Code

6.1 Electrical characteristics(V_{SS}=0V ,T_a=25°C)

| Parameter | Symbol | Condition | Min | Typ | Max | Unit | Note |
|---------------|-----------------|----------------------|-----------------------|--------------------|-----|--------------------|------|
| Power supply | V _{CC} | T _a =25°C | 2.5 | 3.3 | 3.6 | V | |
| Input voltage | 'H' | V _{IH} | V _{CC} =2.8V | 0.7V _{CC} | - | V _{CC} | V |
| | 'L' | V _{IL} | V _{CC} =2.8V | 0 | - | 0.3V _{CC} | V |

Note:

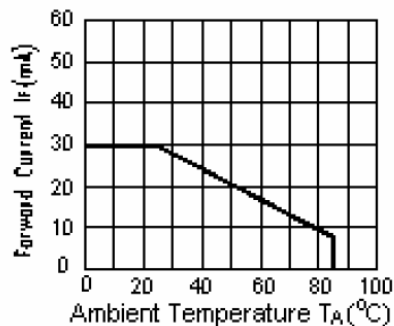
1: Tested in 1×1 chessboard pattern.

6.2 LED backlight specification(V_{SS}=0V ,T_a=25°C)

| Item | Symbol | Condition | Min | Typ | Max | Unit | Note |
|---------------------------|----------------|----------------------|-----|-----|-----|-------------------|------|
| Supply voltage | V _f | I _f =20mA | - | 3.1 | 3.3 | V | |
| Uniformity | Δ Bp | I _f =20mA | 80 | - | - | % | |
| Luminance for LCD(w/o TP) | L _v | I _f =20mA | 70 | 100 | | Cd/m ² | |

Note:

1: The"LED Life time" is defined as the module brightnees decrease to 50% original brightness at T=25°C and I_{LED} =20mA. TheLED Life time could be decreased if operating I_{LED} is larger than 20mA



I_{LED} VS TEMP

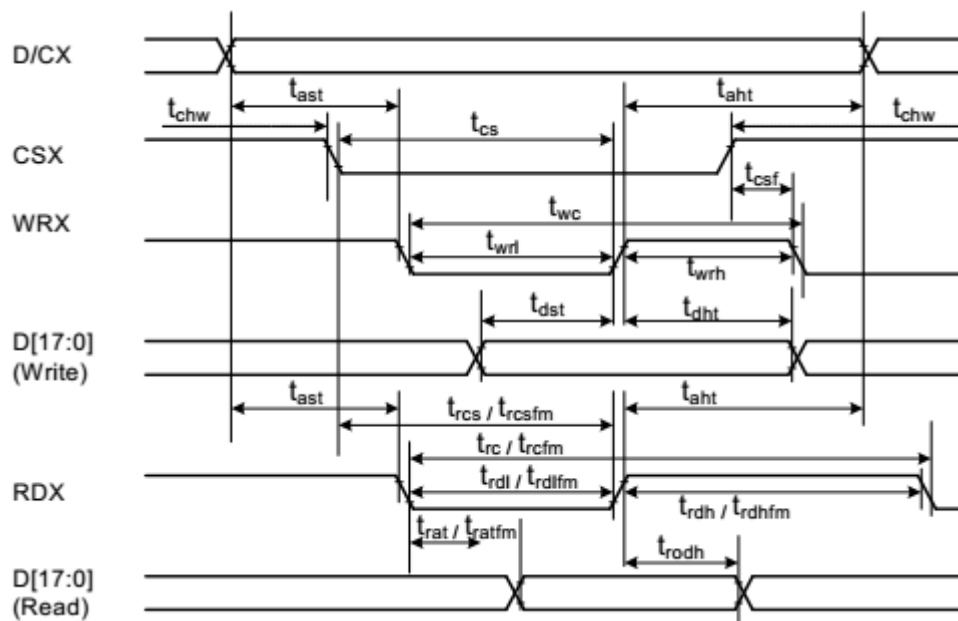
6.3 Interface signals

| Pin NO. | Symbol | I/O | Function |
|---------|----------|-----|--------------------------------|
| 1 | VSS | P | Ground. |
| 2-17 | D0-D15 | I | DATA bus |
| 18 | /CS | I | Chip select signal |
| 19 | /RESET | I | Reset serial(low active) |
| 20 | RS | I | CPU:Data/Command Selection pin |
| 21 | /WR | I | CPU:Write signal and read data |
| 22 | /RD | I | CPU:Read signal and read data |
| 23 | IM0 | I | Select a mode to interface |
| 24 | VCI | I | 2.5V~3.3V |
| 25 | DVDD | I | 1.65V~3.3V |
| 26 | VSS | p | Ground. |
| 27 | LEDA | p | LED light anode |
| 28-30 | LEDK1-K3 | p | LED light cathode |

NOTE1:

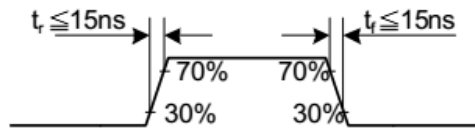
| | |
|-----|--------------------------------|
| IM0 | Interface |
| 0 | LOW,80-system 16-bit interface |
| 1 | HIGH,80-system 8-bit interface |

6.4 Display Parallel 16/8-bit Interface Timing Characteristics (8080)

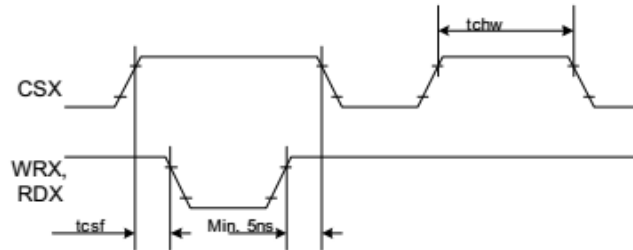


| Signal | Symbol | Parameter | min | max | Unit | Description |
|---|--------|------------------------------------|-----|-----|------|---|
| DCX | tast | Address setup time | 0 | - | ns | |
| | taht | Address hold time (Write/Read) | 0 | - | ns | |
| CSX | tchw | CSX "H" pulse width | 0 | - | ns | |
| | tcs | Chip Select setup time (Write) | 15 | - | ns | |
| | trcs | Chip Select setup time (Read ID) | 45 | - | ns | |
| | trcsfm | Chip Select setup time (Read FM) | 355 | - | ns | |
| | tcsf | Chip Select Wait time (Write/Read) | 10 | - | ns | |
| WRX | twc | Write cycle | 66 | - | ns | |
| | twrh | Write Control pulse H duration | 15 | - | ns | |
| | twrl | Write Control pulse L duration | 15 | - | ns | |
| RDX (FM) | trcfm | Read Cycle (FM) | 450 | - | ns | |
| | trdhfm | Read Control H duration (FM) | 90 | - | ns | |
| | trdlfm | Read Control L duration (FM) | 355 | - | ns | |
| RDX (ID) | trc | Read cycle (ID) | 160 | - | ns | |
| | trdh | Read Control pulse H duration | 90 | - | ns | |
| | trdl | Read Control pulse L duration | 45 | - | ns | |
| D[17:0], D[15:0], D[8:0], D[7:0] | tdst | Write data setup time | 10 | - | ns | For maximum CL=30pF For minimum CL=8pF |
| | tdht | Write data hold time | 10 | - | ns | |
| | trat | Read access time | - | 40 | ns | |
| | tratfm | Read access time | - | 340 | ns | |
| | trod | Read output disable time | 20 | 80 | ns | |

Note: $T_a = -30$ to 70 °C, $V_{DDI}=1.65V$ to $3.3V$, $V_{CI}=2.5V$ to $3.3V$, $V_{SS}=0V$

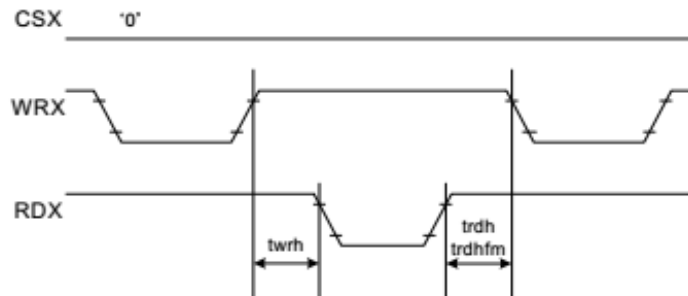


CSX timings :



Note: Logic high and low levels are specified as 30% and 70% of VDDI for Input signals.

Write to read or read to write timings:



Note: Logic high and low levels are specified as 30% and 70% of VDDI for Input signals.

7. Optical Characteristics

7.1 Driving the backlight condition

| Item | Symbol | Condition | Min. | Typ. | Max. | Unit | Note |
|-------------------------|----------------|------------------------------------|-------|-------|-------|-------------------|------|
| Brightness(with TP) | Bp | $\theta=0^\circ$ $\Phi=0^\circ$ | 70 | 100 | - | Cd/m ² | 1 |
| Uniformity | Δ Bp | | 75 | 80 | - | % | 1,2 |
| Viewing Angle | 3:00 | Cr \geq 10 | 30 | 40 | | Deg | 3 |
| | 6:00 | | 30 | 45 | | | |
| | 9:00 | | 40 | 55 | | | |
| | 12:00 | | 45 | 60 | | | |
| Contrast Ratio | Cr | $\theta=0^\circ$ $\Phi=0^\circ$ | 50 | 100 | | - | 4 |
| Response Time | T _r | | - | 40 | - | ms | 5 |
| | T _f | | | | ms | | |
| Color of CIE Coordinate | W | x | -0.05 | 0.278 | +0.05 | - | 1,6 |
| | | y | | 0.288 | | - | |
| | R | x | | 0.555 | | - | |
| | | y | | 0.309 | | - | |
| | G | x | | 0.331 | | - | |
| | | y | | 0.586 | | - | |
| | B | x | | 0.154 | | - | |
| | | y | | 0.079 | | - | |

7.2 Not driving the backlight condition

| Item | Symbol | Condition | Min. | Typ. | Max. | Unit | Note |
|-------------------------|--------|------------------------------------|-------|-------|-------|------|------|
| Contrast Ratio | Cr | $\theta=0^\circ$ $\Phi=0^\circ$ | 5 | 8 | | - | 4 |
| Color of CIE Coordinate | W | x | -0.05 | 0.327 | +0.05 | - | 1,6 |
| | | y | | 0.349 | | - | |
| | R | x | | 0.390 | | - | |
| | | y | | 0.332 | | - | |
| | G | x | | 0.330 | | - | |
| | | y | | 0.405 | | - | |
| | B | x | | 0.215 | | - | |
| | | y | | 0.226 | | - | |

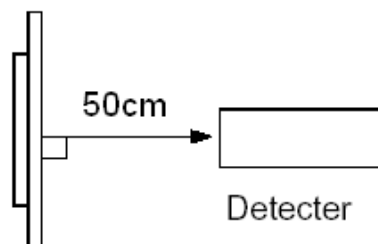
Note: The parameter is slightly changed by temperature, driving voltage and material

Note 1: The data are measured after LEDs are turned on for 5 minutes. LCM displays full white. The brightness is the average value of 9 measured spots. Measurement equipment PR-705 ($\Phi 8\text{mm}$)

Measuring condition:

- Measuring surroundings: Dark room.
- Measuring temperature: $T_a=25^\circ\text{C}$.
- Adjust operating voltage to get optimum contrast at the center of the display.

Measured value at the center point of LCD panel after more than 5 minutes while backlight turning on.

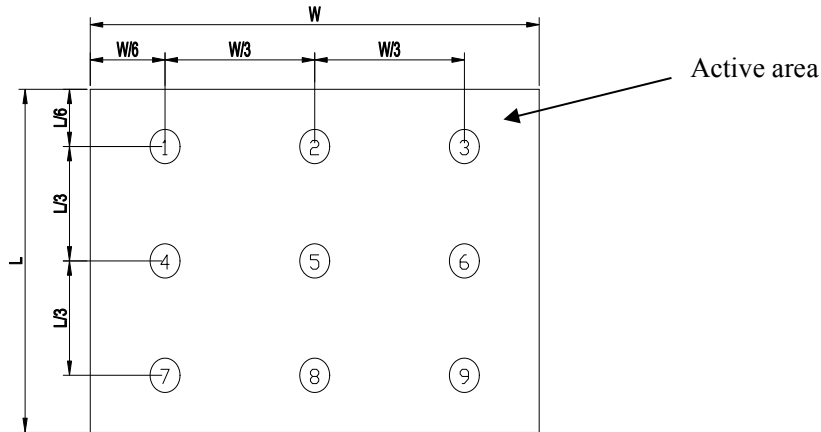


Note 2: The luminance uniformity is calculated by using following formula.

$$\Delta Bp = Bp (\text{Min.}) / Bp (\text{Max.}) \times 100 (\%)$$

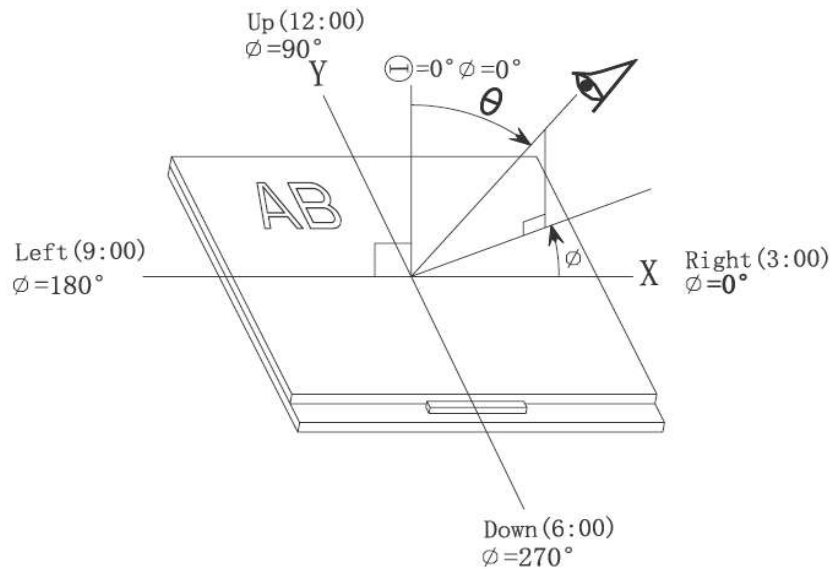
Bp (Max.) = Maximum brightness in 9 measured spots

Bp (Min.) = Minimum brightness in 9 measured spots.

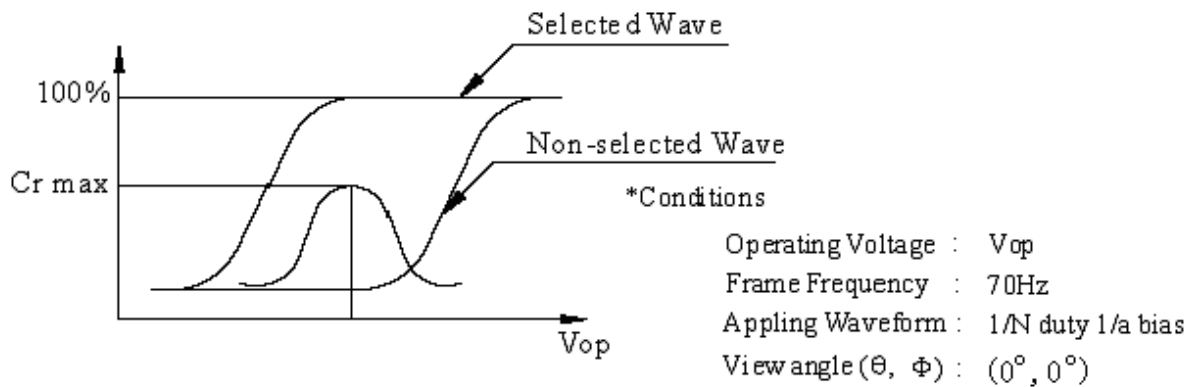


Note 3: The definition of viewing angle:

Refer to the graph below marked by θ and ϕ



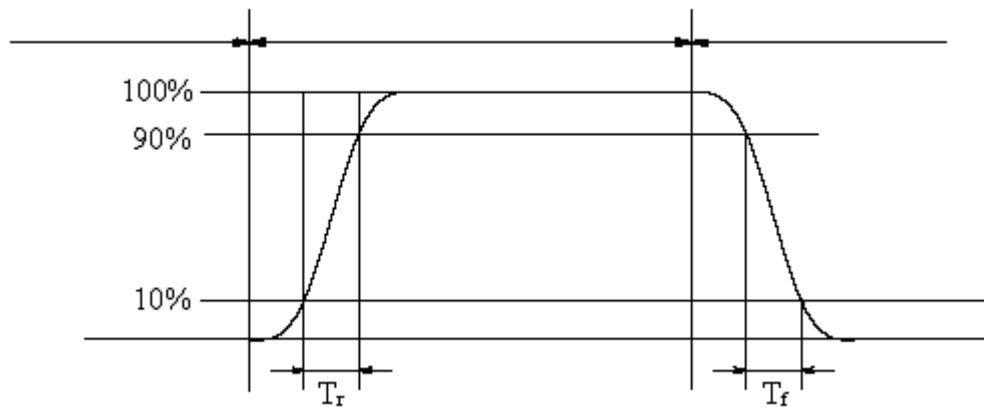
Note 4: Definition of contrast ratio.(Test LCD using DMS501)



$$\text{Contrast ratio}(Cr) = \frac{\text{Brightness of selected dots}}{\text{Brightness of non-selected dots}}$$

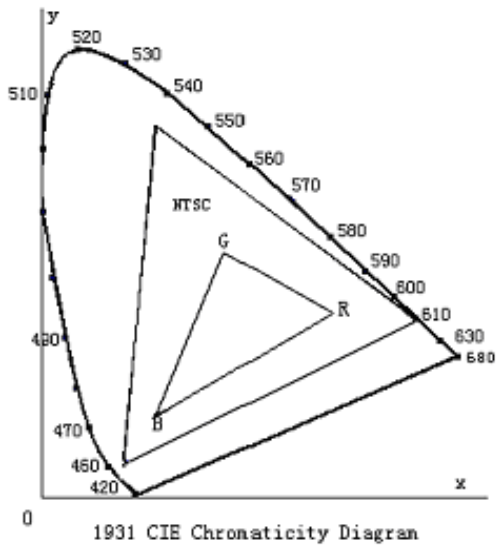
Note 5: Definition of Response time. (Test LCD using DMS501):

The output signals of photo detector are measured when the input signals are changed from “black” to “white”(falling time) and from “white” to “black”(rising time), respectively. The response time is defined as the time interval between the 10% and 90% of amplitudes. Refer to figure as below.



The definition of response time

Note 6: Definition of Color of CIE Coordinate and NTSC Ratio.

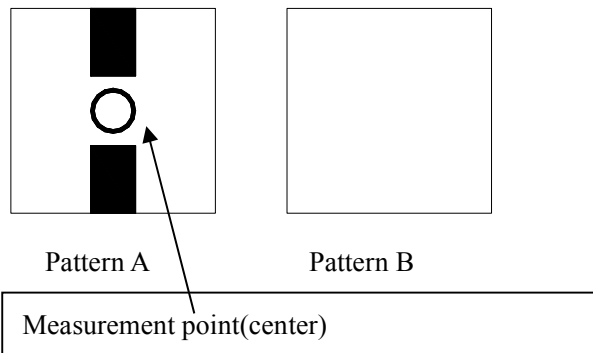


Color gamut:

$$S = \frac{\text{area of RGB triangle}}{\text{area of NTSC triangle}} \times 100\%$$

Note 7: Definition of cross talk.

Cross talk ratio(%)= | pattern A Brightness-pattern B Brightness | / pattern A Brightness*100



Electric volume value=3F+/-3Hex

8. Reliability Test Items and Criteria

| No | Test Item | Test condition | Criterion |
|----|-------------------------------------|--|--|
| 1 | High Temperature Storage | 80°C±2°C 96H Restore 2H at 25°C Power off | 1. After testing, cosmetic and electrical defects should not happen. 2. Total current consumption should not be more than twice of initial value. |
| 2 | Low Temperature Storage | -30°C±2°C 96H Restore 2H at 25°C Power off | |
| 3 | High Temperature Operation | 70°C±2°C 96H Restore 2H at 25°C Power on | |
| 4 | Low Temperature Operation | -20°C±2°C 96H Restore 4H at 25°C Power on | |
| 5 | High Temperature/Humidity Operation | 60°C±2°C 90%RH 96H Power on | |
| 6 | Temperature Cycle | -30°C → 80°C 30min 5min 30min after 5 cycle, Restore 2H at 25°C Power off | |
| 7 | Vibration Test | 10Hz~150Hz, 100m/s ² , 120min | Not allowed cosmetic and electrical defects. |
| 8 | Shock Test | Half- sine wave, 300m/s ² , 11ms | |

Note: Operation: Supply 2.8V for logic system.

The inspection terms after reliability test, as below

| ITEM | Inspection |
|------------|-------------------|
| Contrast | CR>50% |
| IDD | IDD<200% |
| Brightness | Brightness>60% |
| Color Tone | Color Tone+/-0,05 |

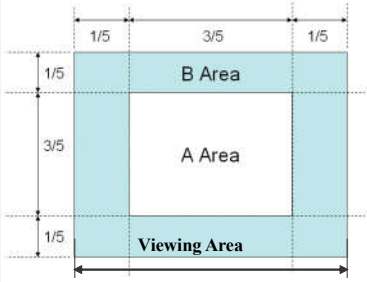
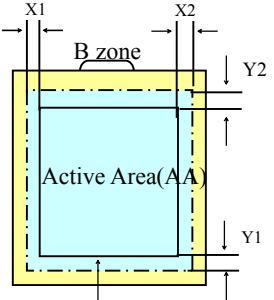
9 Quality level

9.1 Classification of defects

Major defects (MA): A major defect refers to a defect that may substantially degrade usability for product applications, including all functional defects (such as no display, abnormal display, open or missing segment, short circuit, missing component), outline dimension beyond the drawing, progressive defects and those affecting reliability.

Minor defects (MI): A minor defect refers to a defect which is not considered to be able to substantially degrade the product application or a defect that deviates from existing standards almost unrelated to the effective use of the product or its operation, such as black spot, white spot, bright spot, pinhole, black line, white line, contrast variation, glass defect, polarizer defect, etc.

9.2 Definition of inspection range

| | |
|--|--|
| <p>For dot defect of TFT LCD which is not smaller than 3 inches, dividing three areas to make a judgment (according to figure 1).</p> <p>A area : center of viewing area B area : periphery of viewing area C area : Outside viewing area</p> <p>For other defects, dividing two areas to make a judgment (according figure 2).</p> <p>A zone : Inside Viewing area B zone : Outside Viewing area</p> <p>X1(A.A~V.A): 2mm X2(A.A~V.A): 2mm Y1(A.A~V.A): 2mm Y2(A.A~V.A): 2mm</p> |  <p>Figure 1</p>  <p>Figure 2</p> |
|--|--|

9.3 Inspection items and general notes

| | | |
|------------------|---|--|
| General notes | <p>Should any defects which are not specified in this standard happen, additional standard shall be determined by mutual agreement between customer and our company.</p> <p>Viewing area should be the area which our company guarantees.</p> <p>Limit sample should be prior to this Inspection standard.</p> <p>Viewing judgment should be under static pattern.</p> <p>Inspection conditions</p> <p>Inspection distance: 250 mm (from the sample) Temperature : 25±5 °C</p> <p>Inspection angle : 45 degrees in 6 o'clock direction (all defects in viewing area should be inspected from this direction)</p> | |
| Inspection items | <p>Pinhole, Bright spot, Black spot, White spot, Black line, White Line, Foreign particle, Bubble</p> | <p>The color of a small area is different from the remainder. The phenomenon doesn't change with voltage</p> |
| | <p>Contrast variation</p> | <p>The color of a small area is different from the remainder. The phenomenon changes with voltage</p> |

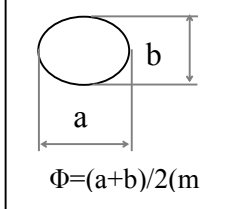
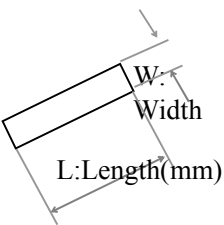
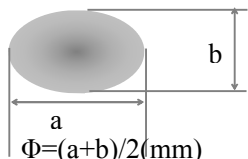
| | | |
|--|----------------------|---|
| | Polarizer defect | Scratch, Dirt, Particle, Bubble on polarizer or between polarizer and glass |
| | Dot defect (TFT LCD) | The pixel appears bright or dark abnormally when display |
| | Functional defect | No display, Abnormal display, Open or missing segment, Short circuit, False viewing direction |
| | Glass defect | Glass crack, Shaved corner of glass, Surplus glass |
| | PCB defect | Components assembly defect |

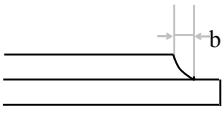
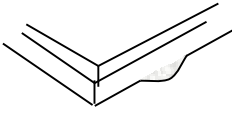
9.4 Outgoing Inspection level

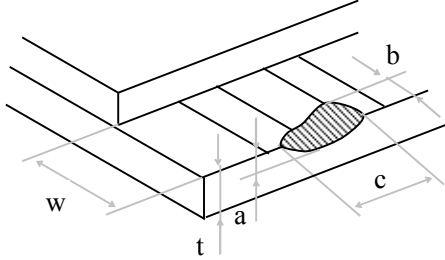
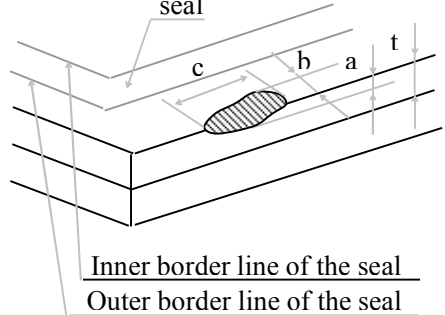
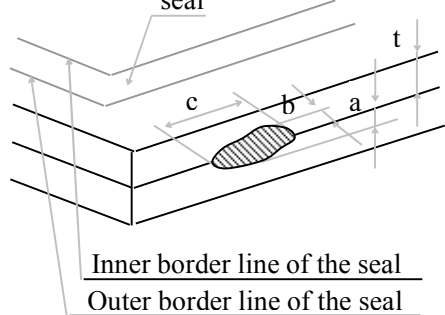
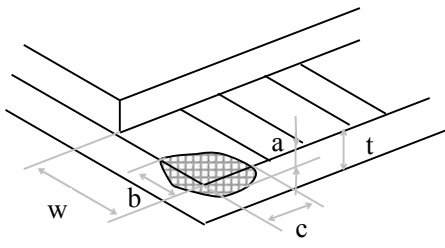
| Outgoing Inspection standard | Inspection conditions | Inspection | | | | |
|------------------------------|-----------------------|------------|------|------|----|------|
| | | Min. | Max. | Unit | IL | AQL |
| Major Defects | See 9.3 general notes | See 9.5 | | | II | 0.65 |
| Minor Defects | See 9.3 general notes | See 9.5 | | | II | 0.65 |

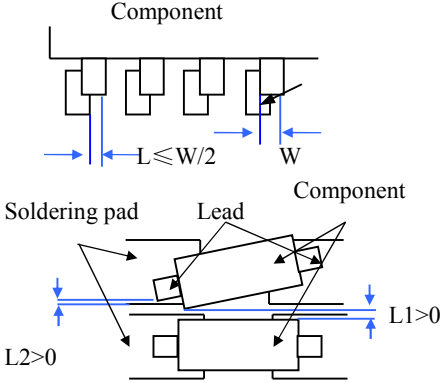
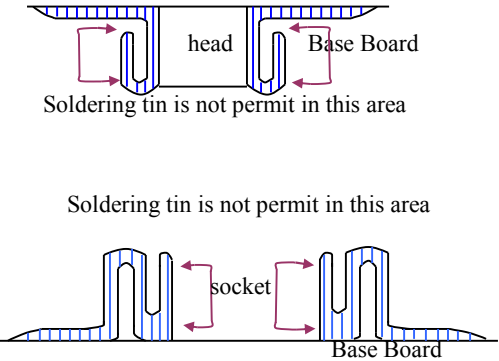
Note: Sampling standard conforms to GB2828

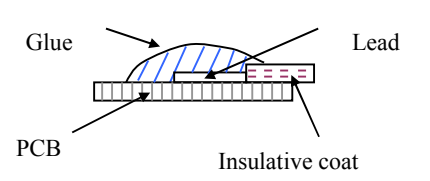
9.5 Inspection Items and Criteria

| Inspection items | | | Judgment standard | | | |
|------------------|--|---|-----------------------------|--------------------------------------|-------------------|-----------|
| | | | Category | | Acceptable number | |
| | | | | | A zone | B zone |
| 1 | Black spot, White spot, Pinhole, Foreign Particle, Particle in or on glass, Scratch on glass |  | A | $\Phi \leq 0.10$ | Neglected | Neglected |
| | | | B | $0.10 < \Phi \leq 0.2$ | 1 | |
| | | | C | $0.2 < \Phi$ | 0 | |
| | | | D | - | - | |
| | | | Total defective point(B,C) | | 1 | |
| 2 | Black line, White line, and Particle Between Polarizer and glass, Scratch on glass |  | A | $W \leq 0.02$ | Neglected | Neglected |
| | | | B | $0.02 < W \leq 0.03$ $L \leq 1.0$ | 1 | |
| | | | C | $0.03 < W \leq 0.05$ $L > 1.0$ | 0 | |
| | | | D | $0.05 < W, 1.0 < L$ | 0 | |
| | | | Total defective point(B,C) | | 1 | |
| 3 | Bright spot | | any size | none | none | |
| 4 | Contrast variation |  | A | $\Phi < 0.2$ | Neglected | Neglected |
| | | | B | $0.2 < \Phi \leq 0.3$ | 2 | |
| | | | C | $0.3 < \Phi \leq 0.4$ | 1 | |
| | | | D | $0.4 < \Phi$ | 0 | |
| | | | Total defective point(B,C) | | 3 | |
| 5 | Bubble inside cell | | any size | none | none | |
| 6 | Polarizer defect (if Polarizer is used) | Scratch ,damage on polarizer, Particle on polarizer or between polarizer and glass. | Refer to item 1 and item 2. | | | |
| | | | Bubble, dent and convex | A | $\Phi \leq 0.1$ | Neglected |
| | | B | | $0.1 < \Phi \leq 0.2$ | 1 | |
| | | C | | $0.2 < \Phi$ | 0 | |

| | | | |
|----|-----------------------------|--|--|
| 7 | Surplus glass | Stage surplus glass  | $B \leq 0.3\text{mm}$ |
| | | Surrounding surplus glass  | Should not influence outline dimension and assembling. |
| 8 | Open segment or open common | | Not permitted |
| 9 | Short circuit | | Not permitted |
| 10 | False viewing direction | | Not permitted |
| 11 | Contrast ratio uneven | | According to the limit specimen |
| 12 | Crosstalk | | According to the limit specimen |
| 13 | Black /White spot(display) | | Refer to item 1 |
| 14 | Black /White line(display) | | Refer to item 2 |

| Inspection items | | Judgment standard | | Acceptable number | |
|------------------|--|---|--|---|-----------------------|
| | | Category(application: B zone) | | | |
| 15 | Glass defect crack | i) The front of lead terminals  | A | $a \leq t, b \leq 1/5W, c \leq 3\text{mm}$ | Max.3 defects allowed |
| | | | B | Crack at two sides of lead terminals should not cover patterns and alignment mark | |
| | | ii) Surrounding crack-non-contact side  | | $b < \text{Inner borderline of the seal}$ | |
| | | iii) Surrounding crack- contact side  | | $b < \text{Outer borderline of the seal}$ | |
| | iv) Corner  | A | $a \leq t, b \leq 3.0, c \leq 3.0$ | | |
| | | B | Glass crack should not cover patterns u and alignment mark and patterns. | | |

| Inspection items | | Judgment standard | |
|------------------|------------|---|--|
| | | Category(application: B zone) | |
| 16 | PCB defect | <p>Component soldering: No cold soldering、short、open circuit、burr、tin ball The flat encapsulation component position deviation must be less than 1/3 width of the pin (Pic.1); the sheet component deviation: Pin deviates from the pad and contact with the near components is not permitted (Pic.2)</p> |  |
| | | <p>lead defect: The lead lack must be less than 1/3 of its width; The lead burr must be less than 1/3 of the seam; Impurities connect with the near leads is not permitted</p> | |
| | | <p>Connector soldering: Soldering tin is at contact position of the plug and socket is not permitted No foundation is scald Serious cave distortion on plug and socket contact pin is not permitted</p> |  |

| | | |
|--|---|--|
| | <p>Glue on root of the speaker receiver and motor lead: The insulative coat of the lead must join into the PCB; the protected glue must envelop to the insulative coat.</p> |  |
|--|---|--|

10. Precautions for Use of LCD Modules

10.1 Handling Precautions

- 10.1.1 The display panel is made of glass. Do not subject it to a mechanical shock by dropping it from a high place, etc.
- 10.1.2 If the display panel is damaged and the liquid crystal substance inside it leaks out, be sure not to get any in your mouth, if the substance comes into contact with your skin or clothes, promptly wash it off using soap and water.
- 10.1.3 Do not apply excessive force to the display surface or the adjoining areas since this may cause the color tone to vary.
- 10.1.4 The polarizer covering the display surface of the LCD module is soft and easily scratched. Handle this polarizer carefully.
- 10.1.5 If the display surface is contaminated, breathe on the surface and gently wipe it with a soft dry cloth. If still not completely clear, moisten cloth with one of the following solvents:
- Isopropyl alcohol
 - Ethyl alcohol
- Solvents other than those mentioned above may damage the polarizer. Especially, do not use the following:
- Water
 - Ketone
 - Aromatic solvents
- 10.1.6 Do not attempt to disassemble the LCD Module.

10.1.7 If the logic circuit power is off, do not apply the input signals.

10.1.8 To prevent destruction of the elements by static electricity, be careful to maintain an optimum work environment.

a. Be sure to ground the body when handling the LCD Modules.

b. Tools required for assembly, such as soldering irons, must be properly ground.

c. To reduce the amount of static electricity generated, do not conduct assembly and other work under dry conditions.

d. The LCD Module is coated with a film to protect the display surface. Be care when peeling off this protective film since static electricity may be generated.

10.2 Storage precautions

10.2.1 When storing the LCD modules, avoid exposure to direct sunlight or to the light of fluorescent lamps.

10.2.2 The LCD modules should be stored under the storage temperature range.

If the LCD modules will be stored for a long time, the recommend condition is:

Temperature : $0^{\circ}\text{C} \sim 40^{\circ}\text{C}$

Relatively humidity: $\leq 80\%$

10.2.3 The LCD modules should be stored in the room without acid, alkali and harmful gas.

10.3 The LCD modules should be no falling and violent shocking during transportation, and also should avoid excessive press, water, damp and sunshine.

Our company network supports you worldwide with offices in Germany, Austria, Switzerland, the UK and the USA. For more information please contact:

Headquarters

Germany



FORTEC Elektronik AG
Lechwiesenstr. 9
86899 Landsberg am Lech

Phone: +49 8191 91172-0
E-Mail: sales@forteca.de
Internet: www.forteca.de

Fortec Group Members

Austria



FORTEC Elektronik AG
Office Vienna

Nuschinggasse 12
1230 Wien

Phone: +43 1 8673492-0
E-Mail: office@fortec.at
Internet: www.fortec.at

Germany



Distec GmbH

Augsburger Str. 2b
82110 Germering

Phone: +49 89 894363-0
E-Mail: info@distec.de
Internet: www.distec.de

Switzerland



ALTRAC AG

Bahnhofstraße 3
5436 Würenlos

Phone: +41 44 7446111
E-Mail: info@altrac.ch
Internet: www.altrac.ch

United Kingdom



Display Technology Ltd.

Osprey House, 1 Osprey Court
Hichingbrooke Business Park
Huntingdon, Cambridgeshire, PE29 6FN

Phone: +44 1480 411600
E-Mail: info@displaytechnology.co.uk
Internet: www.displaytechnology.co.uk

USA



Apollo Display Technologies, Corp.

87 Raynor Avenue,
Unit 1 Ronkonkoma,
NY 11779

Phone: +1 631 5804360
E-Mail: info@apolloDisplays.com
Internet: www.apolloDisplays.com