

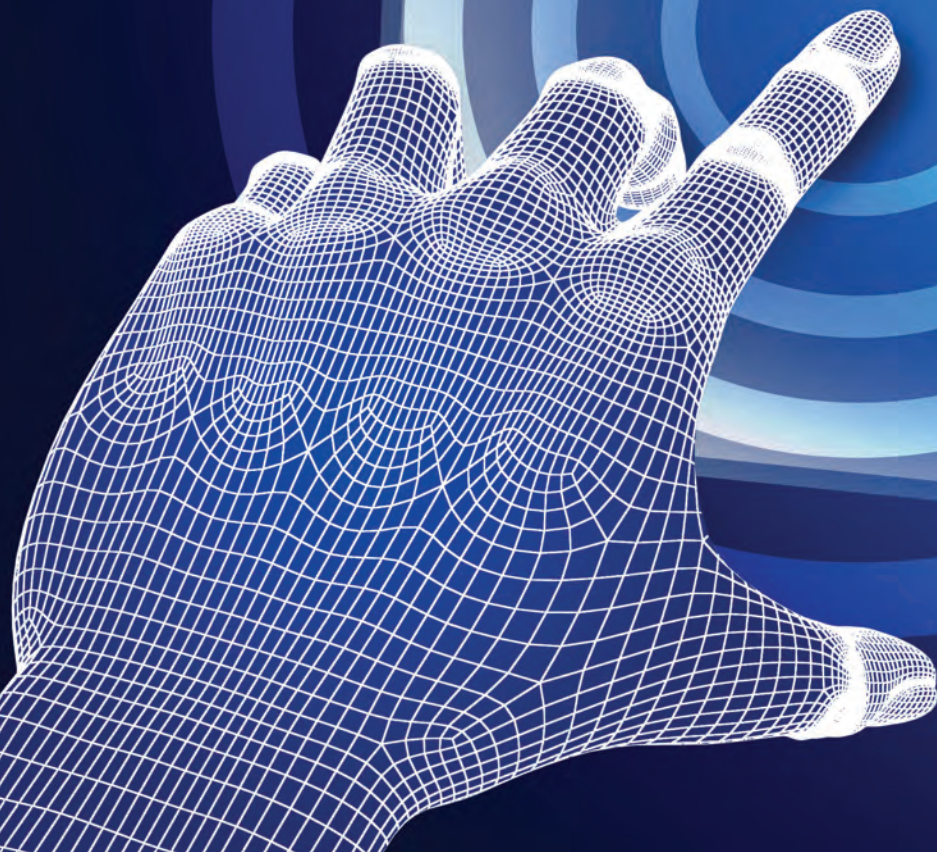


---

DISPLAY TECHNOLOGY  
A FORTEC GROUP MEMBER

# **CASE** STUDIES

**EMPOWERING DISPLAY TECHNOLOGY**



# Index



DISPLAY TECHNOLOGY  
A FORTEC GROUP MEMBER



## Costa Marlow

Bespoke 27" Touch Screen



## Felixstowe Docks

12.1" Industrial High Bright Monitor



## Bloomberg Touch Table

Touch Screen Terminal with interactive content



## Ping Pong

Weather Resistant A-Totem



## Vision Express

Branded Digital Signage



## The Walkie Talkie

Interactive Touch Screen

# Costa Marlow

Coffee Vending Machine



DISPLAY TECHNOLOGY  
A FORTEC GROUP MEMBER

## Features

- Large Slim, Bright LCD
- Wide Viewing Angle
- High Quality Contrast and Colour
- Bespoke Tooled Front Glass with Chemical Toughening
- Ceramic screen print and bonded PCAP touch sensor
- Integrated Industrial PC for lifetime supply and long operating hours



## Why DT?

DT provide a custom front glass bonded to an ITO Projective Capacitive multi-touch sensory stimuli. This is built onto a metal chassis containing an industrial long life LCD, customer facing PC.

The Marlow has been designed as a flagship all-in-one vending terminal providing, ambient audio, service prompted scents and a large, bright and responsive touch interface. It has been designed for seamless integration into the vending frame for ease of replacement should a problem be encountered. The Customer facing PC has a digital camera and power/data connections for the machine tele-mentary and payment systems.



Useful Links : [Optical Bonding](#) [Infinite Touch](#)

[www.displaytechnology.co.uk](http://www.displaytechnology.co.uk)

# Felixstowe Docks

## Industrial Crane Monitor



DISPLAY TECHNOLOGY  
A FORTEC GROUP MEMBER

## Features

- Surface Capacitive 3M touchscreen
- In house designed PrismaECOIII AD card
- High bright 12.1" Display -1100cd
- LED backlit in house upgraded
- Screws threadlocked for increased shock stability
- Armoured umbilical conduit with bespoke cable harness
- 0-100% analogue dimming Constant Current Regulator board
- Smooth edges & corners (Welded and dressed)



## Why DT?

DT rapid prototyped the unit utilising our inhouse modified TFT LCD Panel and integrated in house manufactured Prisma board.

We made various design improvement suggestions which the customer decided to implement. This included connector exit position, change in analogue pot, and stronger umbilical conduit.

After pre-production the mounting of the touchscreen was completed using an alternative method to increase ruggedness in such a harsh operating condition.



Useful Links : [Optical Bonding](#) [Infinite Touch](#)

[www.displaytechnology.co.uk](http://www.displaytechnology.co.uk)

# Bloomberg Touch Table

Touch Screen Terminal



DISPLAY TECHNOLOGY  
A FORTEC GROUP MEMBER

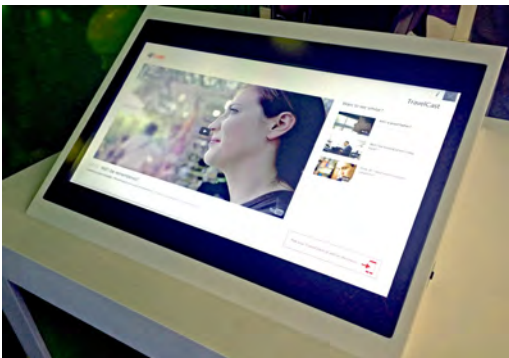
## Features

- Upgrade to existing table
- Flush mounted, rear-screen printed, toughened touch glass
- 4-point multi-touch
- Wireless Charging for personal electronics
- Rugged steel audio outputs for earphones
- Designed for low-profile, unobtrusive presence



## Why DT?

Display Technology were approached by Bloomberg to provide two LCD/ touch interfaces in a housing that could be integrated into the existing Bloomberg Hub area, matching the materials and aesthetic style. DT provided expertise in integrating the electronic components into a compact design and managed overall design/installation with experienced engineers.



A structural upgrade was required to the existing table, allowing for removal of the terminal if required to restore to a non-interactive state. The Corian main structure is custom formed to match existing furniture colours/format and is hardwearing and easy to clean. The Slim-line low power, passively cooled 21.5" LCD's incorporate our Data Display Group Prisma Compact LCD Driver Cards. Both PC's are installed with Working Solution's CyberBrowser software which limits internet access to a controlled number of sites/content.

Useful Links : [Optical Bonding](#) [Infinite Touch](#)

[www.displaytechnology.co.uk](http://www.displaytechnology.co.uk)

# Ping Pong

## Exterior Advertising Display



DISPLAY TECHNOLOGY  
A FORTEC GROUP MEMBER

## Features

- Concealed fittings.
- Weather resistant glass and Perspex shell.
- Networked Media Player for regularly updated content.
- Sturdy steel frame and lockable castors for fixed position.
- 1500Cd High Bright FHD LCD displays for all lighting conditions.



## Why DT?

DT in co-operation with Sign 2000 were able to support all of the customers initial requirements in material/mechanical properties, as well as co-ordinate a link to their business wifi.

The Ping Pong A-Totem is a weather resistant, free standing A-Frame display unit incorporating glass and Perspex facings, steel frame, locking casters and a 46" 1500Cd VideoPoster LCD Mediaplayer Display on each side. This unit is exclusively used by Ping Pong restaurants in the UK for exterior advertising.



Useful Links : [Optical Bonding](#) [Infinite Touch](#)

[www.displaytechnology.co.uk](http://www.displaytechnology.co.uk)

# Vision Express

Branded Digital Signage



DISPLAY TECHNOLOGY  
A FORTEC GROUP MEMBER

## Features

- Industrial quality high bright display
- Easily updatable media player
- Bespoke metal housing
- Range of sizes available



## Why DT?

Through our joint venture with Sign 2000 (Media Sign Technology) we were able to provide an internal digital signage solution for Vision Express. This was to replace their existing advertising displays, with updated technology enabling them to upload pre-scheduled or instant marketing information.



The displays are an industrial quality and have a high brightness of 700 CD which is twice the brightness of a normal household television. It comes complete with a solid state media player, offering connections via wireless operation or direct CAT 5 cable. We supplied these screens in a range of sizes for each environment, each with a bespoke housing chosen by the client. Sign 2000 also provided the Video Poster Digital Media freestanding window display units.

Useful Links : [Optical Bonding](#) [Infinite Touch](#)

[www.displaytechnology.co.uk](http://www.displaytechnology.co.uk)

# The Walkie Talkie

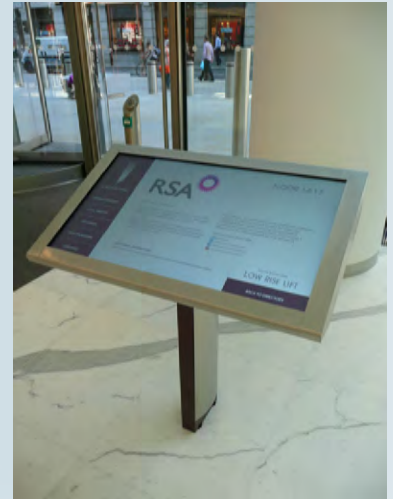
Interactive Touch Screen



DISPLAY TECHNOLOGY  
A FORTEC GROUP MEMBER

## Features

- POS-Line PCAP Dual Touch Display
- Fully bespoke one-off design
- Aerofoil shaped free-standing leg
- Brushed in satin stainless steel
- Modern look and feel



## Why DT?

This resource was designed by the Velvet Principle and includes a touch-screen table top lectern and an interior totem on the ground floor reception. DT was approached to manufacture this fully bespoke one-off design, as a modern digital directory.



The outcome of this design is a completely customized table top touch screen to the specification given by Velvet Principle. We used one of our own POS-Line displays manufactured in Germany in a size of 42". This POS-Line unit has PCAP dual touch, edge to edge technology giving the screen a true-flat look and has a brightness of 700 CD. The unit also includes an aerofoil shaped free-standing leg and is fully fabricated in brushed satin stainless steel.

Useful Links : [Optical Bonding](#) [Infinite Touch](#)

[www.displaytechnology.co.uk](http://www.displaytechnology.co.uk)